

PD1 antibody

Package
100 µl

Host	Rabbit
Clonality	Polyclonal
Isotype	IgG
Application	WB, IHC-P
Reactivity	Human, Mouse

APPLICATION

Application Note

*Optimal dilutions/concentrations should be determined by the researcher.

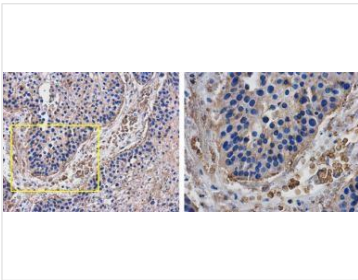
Suggested dilution	Recommended dilution
WB	1:500-1:10000
IHC-P	1:100-1:1000

Not tested in other applications.

Calculated MW 32 kDa

PROPERTIES

Form	Liquid
Buffer	1XPBS (pH7), 20% Glycerol
Preservative	0.01% Thimerosal
Storage	Store as concentrated solution. Centrifuge briefly prior to opening vial. For short-term storage (1-2 weeks), store at 4°C. For long-term storage, aliquot and store at -20°C or below. Avoid multiple freeze-thaw cycles.
Concentration	1 mg/ml (Please refer to the vial label for the specific concentration.)
Immunogen	Recombinant protein encompassing a sequence within the center region of human PD1. The exact sequence is proprietary.
Purification	Purified by antigen-affinity chromatography.
Conjugation	Unconjugated
Note	For laboratory use only. Not for any clinical, therapeutic, or diagnostic use in humans or animals. Not for animal or human consumption.

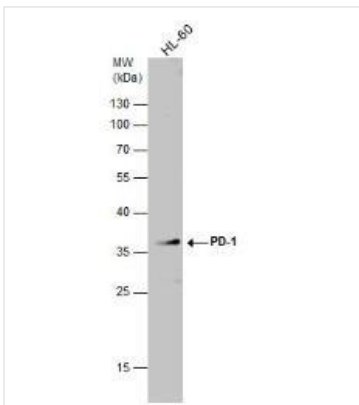


IHC-P Image

PD1 antibody detects PD1 protein at cell membrane of inflammatory cells in human lung cancer by immunohistochemical analysis.

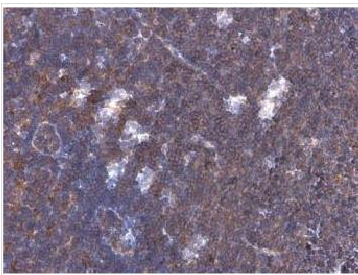
Sample: Paraffin-embedded human lung cancer. PD1 antibody diluted at 1:500.

Antigen Retrieval: Citrate buffer, pH 6.0, 15 min



WB Image

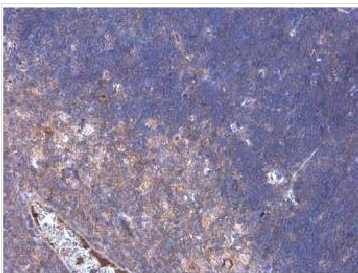
PD-1 antibody detects PD-1 protein by western blot analysis. Whole cell extracts (30 μ g) was separated by 12% SDS-PAGE, and the membrane was blotted with PD-1 antibody diluted at 1:1000. The HRP-conjugated anti-rabbit IgG antibody was used to detect the primary antibody.



IHC-P Image

PD1 antibody detects PD1 protein at cell membrane by immunohistochemical analysis. Sample: Paraffin-embedded mouse lymph node.

PD1 stained by PD1 antibody diluted at 1:500. Antigen Retrieval: Citrate buffer, pH 6.0, 15 min



IHC-P Image

PD1 antibody detects PD1 protein at cell membrane by immunohistochemical analysis. Sample: Paraffin-embedded mouse thymus gland.

PD1 stained by PD1 antibody diluted at 1:500. Antigen Retrieval: Citrate buffer, pH 6.0, 15 min

