

PD-L1 antibody

Package
100 µl

Host	Rabbit
Clonality	Polyclonal
Isotype	IgG
Application	WB, ICC/IF, IHC-P, IHC-Fr, FACS
Reactivity	Human

PRODUCT

Summary

PD-L1 antibody recognizes programmed death-ligand 1 (PD-L1) protein, also known as B7 homolog 1 (B7-H1) and cluster of differentiation 274 (CD274) protein. PD-L1 is found on various cancer cells and transduces immunosuppressive signals by binding to the programmed cell death protein 1 (PD-1) on effector T cells, thereby diminishing immune system attacks on malignant cells. Blocking the interaction between PD-L1 and PD-1 with PD-L1 antibodies is generating great clinical interest as a mode of immunotherapy against a number of cancers.

APPLICATION

Application Note

*Optimal dilutions/concentrations should be determined by the researcher.

Suggested dilution	Recommended dilution
--------------------	----------------------

WB	1:500-1:3000
ICC/IF	1:100-1:1000
IHC-P	1:100-1:1000
IHC-Fr	Assay dependent
FACS	Assay dependent

Not tested in other applications.

Calculated MW 33 kDa.

Observed MW 50 kDa.

PROPERTIES

Form Liquid

Buffer 1XPBS, 1% BSA, 20% Glycerol (pH7)

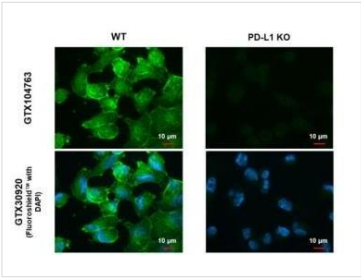
Preservative 0.025% ProClin 300

Storage Store as concentrated solution. Centrifuge briefly prior to opening vial. For short-term storage (1-2 weeks), store at 4°C. For long-term storage, aliquot and store at -20°C or below. Avoid multiple freeze-thaw cycles.

Concentration 0.29 mg/ml (Please refer to the vial label for the specific concentration.)

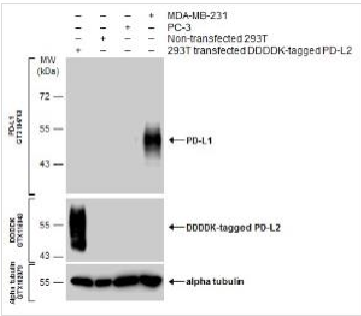
Immunogen	Carrier-protein conjugated synthetic peptide encompassing a sequence within the C-terminus region of human PD-L1. The exact sequence is proprietary.
Purification	Purified by antigen-affinity chromatography.
Conjugation	Unconjugated
Note	For laboratory use only. Not for any clinical, therapeutic, or diagnostic use in humans or animals. Not for animal or human consumption.

DATA IMAGES



GTX104763 ICC/IF Image

PD-L1 antibody detects PD-L1 protein at cell membrane by immunofluorescent analysis. Sample: MDA-MB-231 cells were fixed in ice-cold MeOH for 5 min. Green: PD-L1 stained by PD-L1 antibody diluted at 1:500. Blue: Fluoroshield with DAPI.



GTX104763 WB Image

Various whole cell extracts were separated by 10% SDS-PAGE, and the membranes were blotted with PD-L1 antibody diluted at 1:600 and with DDDDK tag antibody diluted at 1:3000 to detect DDDDK-tagged PD-L2. The HRP-conjugated anti-rabbit IgG antibody was used to detect the primary antibody.